



# BELOVED SANS

- REGULAR & BOLD -

USER'S GUIDE



#### OPENTYPE FAQ:

For information on how to access the swashes and alternates,  
visit [LauraWorthingtonType.com/faqs](http://LauraWorthingtonType.com/faqs)

All operating systems come equipped with a utility that make it possible to access the swashes and alternates in my fonts. Adobe Illustrator and InDesign (CS versions), Quark Xpress 7.0 (and above), CorelDRAW X6 (and above) have OpenType and Glyph panels, You may download instructional PDFs on my FAQs page for these programs. Microsoft Word 2010 and later versions allow you to access some OpenType features in the application as well.

There are additional ways to access alternates/swashes if you do not have one of the programs listed above: either by using your operating system's utility Character Map (Windows), Character Viewer (Mac OS versions prior to 10.9) or through Font Book (Mac OS 10.9 and later), by downloading NexusFont (free, Windows only) or by purchasing a software program such as PopChar or Ultra Character Map.

I recommend trying out Character Map/Viewer or NexusFont first to see how it works for you before purchasing third party software. If you don't like how these utilities work, here are some additional solutions...

For Mac users running OS 10.8 and above, there is Ultra Character Map, which may be downloaded on the App Store for \$9.99

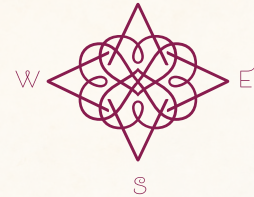
For both Mac and PC, I also recommend PopChar by Ergonis (especially operating systems prior to 10.8), which is a standalone glyphs panel. It makes it easy to select and copy the swash or alternate letterform you want and paste it into just about any document/program (Photoshop, Word, Publisher, etc.) If you have, or are planning to purchase one of my fonts, contact me with a copy of your receipt for a 30% discount code on PopChar.



ENCHANTMENT

BELOVED SANS  
WITH BELOVED  
ORNAMENTS

1<sup>ST</sup>  
AVE &



WEAR

HARMONICA

QILO & GÜS

8<sup>TH</sup> STREET BLUES FESTIVAL

CHILDER'S  
-EXTRA STRONG-

W. BOUGAINVILLEA

1234 YEEHAW! WITH LOVE,  
A&H

# BELOVED SANS

A SIMPLE SANS THAT LIKES TO GET SWASHY

THIS MONOLINE SANS-SERIF SUBTLY EVOKES EARLY 20TH-CENTURY HAND LETTERING MADE WITH A BALLPOINT PEN OR ROUNDED NIB. IT'S AN ALL-CAPITALS FACE WITH CORRESPONDING SMALL CAPITALS SCALED TO ABOUT 85% OF THE ORIGINAL LETTERS – JUST ENOUGH DIFFERENTIATION TO BE DISTINCTIVE IN THE DISPLAY SETTINGS FOR WHICH IT'S DESIGNED.

BELOVED SANS INCLUDES OVER 800 SWASH AND ALTERNATE FORMS, MAKING IT INCREDIBLY USEFUL AND VERSATILE FOR WORDMARKS AND DISTINCTIVE HEADLINES. THE TITLING VARIANT ADDS AN EXTRA STROKE TO THE VERTICALS FOR A HINT OF ART DECO STYLE, WHILE THE SWASHED CAPITALS ADD CALLIGRAPHIC FLAIR TO AN OTHERWISE UNDERSTATED SANS. INCLUDES REGULAR AND BOLD WEIGHTS, AND LINING AND OLD STYLE NUMERALS. MIX AND MATCH CHARACTERS FOR PACKAGE DESIGNS, MENUS, AND INVITATIONS – AND FOR EVEN MORE TYPOGRAPHIC POWER, MIX IT WITH ITS FLOWING COMPANION FACE, *Beloved Script*.

HELLO  
GREETINGS  
&  
SALUTATIONS

BELOVED SANS REGULAR · BOLD  
FONT SPECIFICATIONS

CHARACTERS:

2271 characters per weight

FONT FILES:

1 OpenType (.otf) file and 1 TrueType (.ttf) file

AVAILABLE:

[LauraWorthingtonType.com](http://LauraWorthingtonType.com)

OPENTYPE FAQ:

To access swashes, alternates, ornaments,  
and for any OpenType questions,  
go to [LauraWorthingtonType.com/faqs](http://LauraWorthingtonType.com/faqs)

ORIGINAL RELEASE:

August 2015

LUNCH & DINNER

Two weights, Regular and Bold

A W A K E & L Q X R & A

Over 800 swashes and alternates

PIMIENTA DE CAYENA

This is an all caps font, but the lowercase is about 85% of the height of the uppercase which gives it some word shaping that you normally wouldn't get with an all caps font

ELECTRIC

This is a sans font, but having the addition of swashes and alternates make it rather unique – it's been done before, but it's not commonplace

APARTMENTS

Activate the Titling feature (or select from a glyphs panel) to get a set of art deco-like caps

5 6 7 8 5 6 7 8

Lining and old style numerals

2<sup>ND</sup> & 3<sup>RD</sup> OF FEBRUARY

Ordinals



## STANDARD CHARACTERS

A B C D E F G H I J K L M

N O P Q R S T U V W X Y Z

A B C D E F G H I J K L M N O P Q R S T U V W X Y Z

1 2 3 4 5 6 7 8 9 0 ¼ ½ ¾ ! " # \$ % &

' ( ) \* , - . / : ; < > ? @ [ \ ] ^ \_ { | } ~ ¡ « » ¿

- - ‘ ’ , “ ” „ † ‡ · … ‹ › ¤ £ ¥ € f

## OTHER CHARACTERS

\ " / ^ ˇ ˘ ˙ ˚ ˛ ˜ ¨ ° = + × ÷ - ± · ≈ ≠ ≤ ≥ | ¶ ‰ / © ® ™ ◊

## BASIC & EXTENDED LATIN CHARACTERS

À Á Â Ã Ä Å Æ Ç Ď Ę È

É Ê Ë Ě Ę Ì Í Î Ï Ĺ Ł Ń Ņ Ñ Ò Ó Ô Õ Ö Ø Ó

Ø Œ Ŕ Ŗ Š Ś Ţ Ť Ù Ú Û Ü Ý Ÿ Ž ž Ɔ

À Á Â Ã Ä Å Æ Ç Ď È É Ê Ë Ě Ę

Đ Ì Í Î Ï Ĺ Ł Ń Ņ Ñ Ò Ó Ô Õ Ö Ø Ó

Ø Œ Ŕ Ŗ Š Ś Ɔ Ţ Ť Ù Ú Û Ü Ý Ÿ Ž ž Ɔ



## SWASHES / ALTERNATES

■ STYLISTIC ALTERNATES  $\varepsilon$

■ TITLING A B C D E F G H I J K L M N

O P Q R S T U V W X Y Z

ALTERNATE CAPS (SEE STYLISTIC SETS)

■ OLDSTYLE FIGURES 1 2 3 4 5 6 7 8 9 0

SUPERSCRIPT 1 2 3 4 5 6 7 8 9 0 SUBSCRIPT 1 2 3 4 5 6 7 8 9 0

FRACTIONS  $\frac{1}{4}$   $\frac{1}{2}$   $\frac{3}{4}$   $\frac{1}{3}$   $\frac{2}{3}$   $\frac{1}{8}$   $\frac{3}{8}$   $\frac{5}{8}$   $\frac{7}{8}$  ■ ORDINALS ST ND RD TH

■ AMPERSANDS  $\wp$  & & & & & & &

## STYLISTIC SETS

A A A A A A A A A A A A

SS01 SS02 SS03 SS04 SS05 SS06 SS07 SS08 SS09 SS10 SS11

A A A A A A A A A A A

SS12 SS13 SS14 SS15 SS16 SS17 SS18 SS19 SS20 SS21 SS22 SS23

A A A A A A A

SS24 SS25 SS26 SS27 SS28 SS29 SS30 TITL

A A A A A A A A A A A

SS01 SS02 SS03 SS04 SS05 SS06 SS07 SS08 SS09 SS10 SS11

A A A A A A A A A A A

SS12 SS13 SS14 SS15 SS16 SS17 SS18 SS19 SS20 SS21 SS22 TITL

// UNCATEGORIZED

■ STYLISTIC ALTERNATES (SALT)

■ TITLING (TITL)

BELOVED SANS · SWASHES/ALTERNATES

B B B B B B B B B B B  
SS01 SS02 SS03 SS04 SS05 SS06 SS07 SS08 SS09 TITL

B B B B B  
SS01 SS02 SS03 TITL

C C C C C C C  
SS01 SS02 SS03 SS01 TITL

D D D D D D D  
SS01 SS02 SS03 SS04 SS05 SS06 TITL

D D D D D D  
SS01 SS02 SS03 SS04 TITL

// UNCATEGORIZED

■ STYLISTIC ALTERNATES (SALT)

■ TITLING (TITL)

BELOVED SANS · SWASHES/ALTERNATES

E E E E E E E E E E E E

SS01 SS02 SS03 SS04 SS05 SS06 SS07 SS08 SS09 SS10 SS11

E E E E E E E E E E E

SS12 SS13 SS14 SS15 SS16 SS17 SS18 SS19 SS20 SALT TITL

E E E E E E E

SS01 SS02 SS03 SS04 SS05 TITL

F F F F F F F F F F F F

SS01 SS02 SS03 SS04 SS05 SS06 SS07 SS08 SS09 SS10 SS11

F F F F F F

SS01 SS02 SS03 SS04 TITL

// UNCATEGORIZED

■ STYLISTIC ALTERNATES (SALT)

■ TITLING (TITL)

BELOVED SANS · SWASHES/ALTERNATES

G G G G G G G G G  
 SS01 SS02 SS03 SS04 SS05 SS06 SS07 SS08

G G G G G G G G G  
 SS09 SS10 SS11 SS12 SS13 SS14 SS15 SS16 TITL

G G G G G G  
 SS01 SS02 SS03 SS04 SS05 TITL

H H H H H H H H H H H H  
 SS01 SS02 SS03 SS04 SS05 SS06 SS07 SS08 SS09 SS10 SS11

H H H H H H H H H H H H  
 SS12 SS13 SS14 SS15 SS16 SS17 SS18 SS19 SS20 SS21 SS22 SS23

// UNCATEGORIZED

■ STYLISTIC ALTERNATES (SALT)

■ TITLING (TITL)

BELOVED SANS · SWASHES/ALTERNATES














SS24   SS25   SS26   SS27   SS28   SS29   SS30   SS21   SS32   S33   SS34   SS35






SS36   SS37   SS38   TITL













SS01   SS02   SS03   SS04   SS05   SS06   SS07   SS08   SS09   SS10   SS11














SS12   SS13   SS14   SS15   SS16   SS17   SS18   SS19   SS20   SS21   SS22   SS23














SS24   SS25   SS26   SS27   SS28   SS29   SS30   SS21   SS32   S33   SS34   SS35

// UNCATEGORIZED

 STYLISTIC ALTERNATES (SALT)

 TITLING (TITL)

BELOVED SANS · SWASHES/ALTERNATES

Ḥ H H H

SS36 SS37 SS38 TITL

| T Q T J | |

SS01 SS02 SS03 SS04 TITL TITL

J J J J J J L L J J

SS01 TITL SS01 SS02 SS03 SS04 SS05 TITL

K K K K K K K K K

SS01 SS02 SS03 SS04 SS05 SS06 SS07 SS08

K K K K K K K

SS09 SS10 SS11 SS12 SS13 SS14 SS15 TITL

// UNCATEGORIZED

■ STYLISTIC ALTERNATES (SALT)

■ TITLING (TITL)

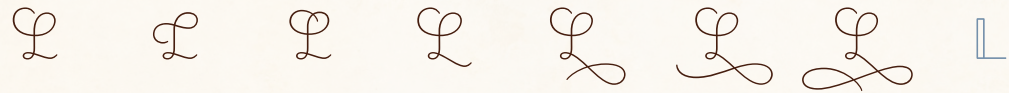
BELOVED SANS · SWASHES/ALTERNATES



SS01 SS02 SS03 SS04 SS05 SS06 SS07 SS08 TITL



SS01 SS02 SS03 SS04 SS05 SS06 SS07 SS08 SS09 SS10 SS11



SS12 SS13 SS14 SS15 SS16 SS17 SS18 TITL



SS01 SS02 SS03 SS04 SS05 TITL



SS01 SS02 SS03 SS04 SS05 SS06 SS07 SS08 SS09 SS10 SS11

// UNCATEGORIZED    ■ STYLISTIC ALTERNATES (SALT)    ■ TITLING (TITL)



BELOVED SANS · SWASHES/ALTERNATES



SS12 SS13 SS14 TITL



SS01 SS02 SS03 SS04 SS05 SS06 SS07 SS08 SS09



SS10 SS11 SS12 TITL



SS01 SS02 SS03 SS04 SS05 SS06 SS07 SS08 SS09



SS10 SS11 TITL

// UNCATEGORIZED

■ STYLISTIC ALTERNATES (SALT)

■ TITLING (TITL)

BELOVED SANS · SWASHES/ALTERNATES

---

N	N	N	N	N	N	N	N	N	N	N	N
	SS01	SS02	SS03	SS04	SS05	SS06	SS07	SS08	SS09	SS10	TITL

O	O	O	O	O	O	O	O	O
	SS01	SS02	SS03	SS04	SS05	SS06	SS07	TITL

O	O	O
	SS01	SS02

P	P	P	P	P	P	P	P
	SS01	SS02	SS03	SS04	TITL		TITL

Q	Q	Q	Q	Q	Q	Q	Q	Q	Q	Q
	SS01	SS02	SS03	SS04	SS05	SS06	SS07	SS08	SS09	TITL

// UNCATEGORIZED      ■ STYLISTIC ALTERNATES (SALT)      ■ TITLING (TITL)

BELOVED SANS · SWASHES/ALTERNATES

Q Q Q Q Q Q Q Q Q Q  
SS01 SS02 SS03 SS04 SS05 SS06 SS07 SS08 SS09 TITL

R R R R R R R R R R R R  
SS01 SS02 SS03 SS04 SS05 SS06 SS07 SS08 SS09 SS10 SS11

R R R R R R R R R R  
SS12 SS13 SS14 SS15 SS16 SS17 SS18 SS19 SS20 TITL

R R R R R R R R R R R R  
SS01 SS02 SS03 SS04 SS05 SS06 SS07 SS08 SS09 SS10 SS11

S S S S S S S S S S S  
SS01 SS02 SS03 SS04 SS05 SS06 TITL SS01 TITL

// UNCATEGORIZED

■ STYLISTIC ALTERNATES (SALT)

■ TITLING (TITL)

BELOVED SANS · SWASHES/ALTERNATES

T T T T T T T T T

SS01 SS02 SS03 SS04 SS05 SS06 SS07 TITL

T T T T T T T

SS01 SS02 SS03 SS04 SS05 TITL

U U U U U U U U U U

SS01 SS02 SS03 SS04 SS05 SS06 SS07 SS08 SS09

T T T U

SS10 SS11 SS12 TITL

U U U U U U U U U U U

SS01 SS02 SS03 SS04 SS05 SS06 SS07 SS08 SS09 SS10 TITL

// UNCATEGORIZED

■ STYLISTIC ALTERNATES (SALT)

■ TITLING (TITL)









BELOVED SANS · SWASHES/ALTERNATES

---

									
	SS01	SS02	SS03	SS04	SS05	SS06	SS07	SS08	TITL

									
	SS01	SS02	SS03	SS04	SS05	SS06	SS07	SS08	TITL

											
	SS01	SS02	SS03	SS04	SS05	SS06	SS07	SS08	SS09	SS10	SS11

							
SS12	SS13	SS14	SS15	SS16	SS17	SS18	TITL

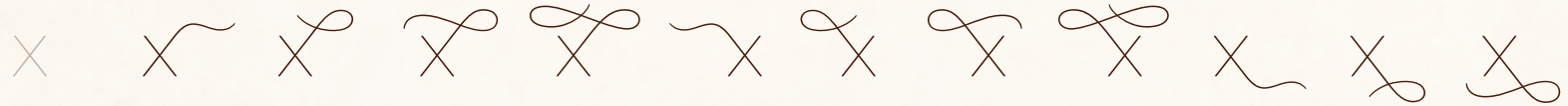
											
	SS01	SS02	SS03	SS04	SS05	SS06	SS07	SS08	SS09	SS10	SS11

// UNCATEGORIZED      ■ STYLISTIC ALTERNATES (SALT)      ■ TITLING (TITL)

BELOVED SANS · SWASHES/ALTERNATES



SS12 SS13 SS14 SS15 SS16 SS17 SS18 TITL



SS01 SS02 SS03 SS04 SS05 SS06 SS07 SS08 SS09 SS10 SS11



SS12 SS13 SS14 SS15 SS16 TITL



SS01 SS02 SS03 SS04 SS05 SS06 SS07 SS08 SS09 SS10 SS11



SS12 SS13 SS14 SS15 SS16 TITL

// UNCATEGORIZED

■ STYLISTIC ALTERNATES (SALT)

■ TITLING (TITL)

BELOVED SANS · SWASHES/ALTERNATES

Y Y Y Y Y Y Y Y Y Y  
 SS01 SS02 SS03 SS04 SS05 SS06 SS07 SS08 TITL

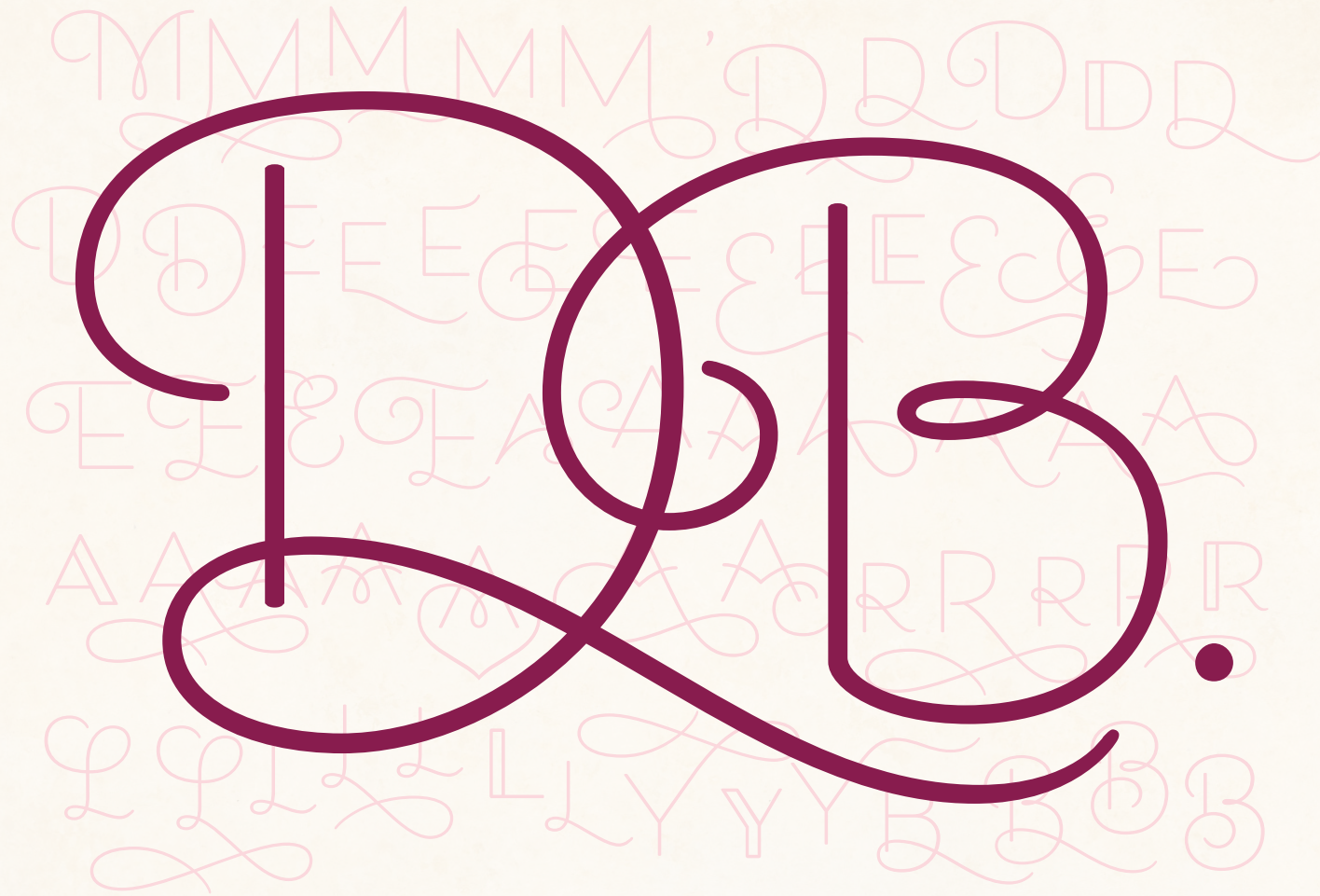
Y Y Y Y Y Y Y Y Y Y  
 SS01 SS02 SS03 SS04 SS05 SS06 SS07 SS08 TITL

Z Z Z Z Z Z Z  
 SS01 SS02 SS03 SS04 SS05 SS06 TITL

Z Z Z Z Z Z ST ND RD TH  
 SS01 SS02 SS03 SS04 TITL // // // //

& & & & & & & &  
 // // // // // // // // //

// UNCATEGORIZED    ■ STYLISTIC ALTERNATES (SALT)    ■ TITLING (TITL)



VARIOUS SWASHES & ALTERNATES

---



BALSAM  
& OAKS  
25TH ANNIVERSARY  
CELEBRATION!

STANDARD CHARACTERS

BALSAM  
& OAKS

25<sup>TH</sup> ANNIVERSARY  
CELEBRATION!

SWASHES & ALTERNATES

BALSAM

& OAKS

25<sup>TH</sup> ANNIVERSARY  
CELEBRATION!

SWASHES & ALTERNATES

- SS04
- SS02
- SS06
- TITLING (TITL)
- AMPERSANDS (// UNCATEGORIZED)
- SS07
- OLDSTYLE FIGURES (// UNCATEGORIZED)
- ORDINALS (// UNCATEGORIZED)

OR MUSCATELLA  
NEW YORK · LOS ANGELES · MILAN

BELOVED  
SCRIPT &  
BELOVED SANS  
& BELOVED  
ORNAMENTS

*Frosty Peaks*  
- ICE CREAM -

---

*Scoops of the Day!*

---

SALTED CARAMEL *lllee*

*→* KAFIR LIME LEAF

CHILI CHOCOLATE *🌀*

*WILD HORSES*  
*Couldn't drag me away*



Beloved Script  
regular & bold  
User's Guide



#### OPENTYPE FAQ:

For information on how to access the swashes and alternates,  
visit [LauraWorthingtonType.com/faqs](http://LauraWorthingtonType.com/faqs)

All operating systems come equipped with a utility that make it possible to access the swashes and alternates in my fonts. Adobe Illustrator and InDesign (CS versions), Quark Xpress 7.0 (and above), CorelDRAW X6 (and above) have OpenType and Glyph panels, You may download instructional PDFs on my FAQs page for these programs. Microsoft Word 2010 and later versions allow you to access some OpenType features in the application as well.

There are additional ways to access alternates/swashes if you do not have one of the programs listed above: either by using your operating system's utility Character Map (Windows), Character Viewer (Mac OS versions prior to 10.9) or through Font Book (Mac OS 10.9 and later), by downloading NexusFont (free, Windows only) or by purchasing a software program such as PopChar or Ultra Character Map.

I recommend trying out Character Map/Viewer or NexusFont first to see how it works for you before purchasing third party software. If you don't like how these utilities work, here are some additional solutions...

For Mac users running OS 10.8 and above, there is Ultra Character Map, which may be downloaded on the App Store for \$9.99

For both Mac and PC, I also recommend PopChar by Ergonis (especially operating systems prior to 10.8), which is a standalone glyphs panel. It makes it easy to select and copy the swash or alternate letterform you want and paste it into just about any document/program (Photoshop, Word, Publisher, etc.) If you have, or are planning to purchase one of my fonts, contact me with a copy of your receipt for a 30% discount code on PopChar.



Abuzz over Jazz and Glitz

BELOVED SCRIPT  
WITH BELOVED  
ORNAMENTS

L.M. 1897

Bluegrass & Juniper

hand poured  soy candles

Romeo & Juliet



Jams & Jellies \* Preserves  
needle & thread

# Beloved Script

*The hand of a romantic spirit,  
rendered in ballpoint*

*As befits its name, Beloved Script suggests the hand of a romantic spirit ... albeit one writing with a simple pen. Its monoline strokes evoke classic 20th-century penmanship achieved with a ballpoint or rounded nib.*

*Whereas many digital script typefaces impose simple "on or off" rules about character connections, Beloved Script embodies a more casual and natural state of handwriting —*



*the semi-connected script. These disconnections are apparent in the lower case t, and between rounded characters such as o and v, enabled by more than 40 ligatures.*

*Out of the box, Beloved Script is lively but casual. But with over 1000 swashes and alternates to choose from, including capitals, beginning, and ending forms, it can become a beautifully decorative spectacle, powerful for custom headlines and wordmarks. Includes regular and bold weights. Explore what Beloved Script can do for you.*

*Need even more typographic power? Pair it with its sans-serif companion face, BELOVED SANS.*



Hello

Greetings  
&

Salutations

*Beloved Script regular · bold*

*Font Specifications*

CHARACTERS:

3212 characters per weight

FONT FILES:

1 OpenType (.otf) file and 1 TrueType (.ttf) file

AVAILABLE:

[LauraWorthingtonType.com](http://LauraWorthingtonType.com)

OPENTYPE FAQ:

To access swashes, alternates, ornaments,  
and for any OpenType questions,  
go to [LauraWorthingtonType.com/faqs](http://LauraWorthingtonType.com/faqs)

ORIGINAL RELEASE:

August 2015



Heaps & Pounds

Two weights, Regular and Bold

A W L f z r K C S

Over 1,000 swashes and alternates

Date night at the Chocolaterie

Semi-connected which makes it more casual and natural (most people have semi-connected handwriting, fully connected is rare and I wanted this design to look as authentic as possible)

Th dz fy lt os pz gj tt

40 ligatures ensure smooth connections

sassafrass runner

Each letter has an alternate so that if there's a word with two of the same letters in it, one can be substituted which keeps the font looking natural

x x x x x x c r r r r r

Beginning and ending forms for additional polish (added since most letters are drawn/lettered differently at the end of a word than they are in the middle)



## Standard Characters

A B C D E F G H I J K L M

N O P Q R S T U V W X Y Z

a b c d e f g h i j k l m n o p q r s t u v w x y z

1 2 3 4 5 6 7 8 9 0 1/2 3/4

! " # \$ % & ' ( ) \* , - . / : ; < > ? @ [ \ ] ^ \_ { | } ~ ¡ « »

¡ — ‘ ’ , “ ” „ † • … ( ) ¢ £ ¥ € ¢

## OTHER CHARACTERS

ˆ ˇ ˘ ˙ ˚ ˛ ˜ ˝ ° = + × ÷ − ± · ≈ ≠ ≤ ≥ | ¶ % / © ® ™ ∫

# Basic & Extended Latin Characters

À Á Â Ã Ä Å Æ Ç È É

Ê Ë Ì Í Î Ï Ñ Ò Ó

Ô Õ Ö Ø Æ Œ Š Š Š Ţ Ţ

Ù Ú Û Ü Ý Þ ß

à á â ã ä å æ ç è é ê ë

ë ì í î ï ñ ò ó ô õ ö ø ù ú û ü ý þ ÿ

## Swashes / Alternates

- *Stylistic Alternates* b f g j k p r s y z
- *Ligatures (Standard / Discretionary)* Th dr ds dx dz fy jj lt or os ox  
oz pr ps px pz gj tr ts tt tx tz ur us vx vz wr ws wx wz yj zg zj zr zs zx zz
- *Initial Forms* r s x z   ■ *Medial Forms* x z
- *Terminal Forms* a b c d e h i j k l m n q r s u x y
- *Terminal Forms 2* a c d e h i k m n r u x
- *Contextual Alternates* d f g o p t u w z
- || *Uncategorized forms & ligatures (see Stylistic Sets)*



*Stylistic Sets*

A A A A A A A A A A A A

SS01 SS02 SS03 SS04 SS05 SS06 SS07 SS08 SS09 SS10 SS11

A A A A A A A A A A A

SS12 SS13 SS14 SS15 SS16 SS17 SS18 SS19 SS20 SS21 SS22

a Ca Ca Ca Ca a a as as a a a

SS01 SS02 SS03 SS04 SS05 SS06 SS07 SS08 SS50 FINA FIN2

B B B B B B B B B

SS01 SS02 SS03 SS04 SS05 SS06 SS07 SS08 SS09

- // UNCATEGORIZED
- STYLISTIC ALTERNATES (SALT)
- MEDIAL FORMS (MEDI)
- INITIAL FORMS (INIT)
- TERMINAL FORMS (FINA)
- TERMINAL FORMS 2 (FIN2)
- LIGATURES (LIGA)
- CONTEXTUAL ALTERNATES (CALT)

BELOVED SCRIPT · SWASHES/ALTERNATES



SS10 SS11 SS12 SS13



SS01 SS02 SS03 SS04 SS05 SS06 SS07 SS08 SS09 SS10



SS11 SS12 SS13 SS14 SS15 SS16 SS17 SS18 SS19 SS20



SS21 SS22 SS23 SS24 SS25 SS26 SS27 SS28 SS29 SS30



SS31 SS50 FINA SALT

// UNCATEGORIZED

■ STYLISTIC ALTERNATES (SALT)

■ MEDIAL FORMS (MEDI)

■ INITIAL FORMS (INIT)

■ TERMINAL FORMS (FINA)

■ TERMINAL FORMS 2 (FIN2)

■ LIGATURES (LIGA)

■ CONTEXTUAL ALTERNATES (CALT)



BELOVED SCRIPT · SWASHES/ALTERNATES

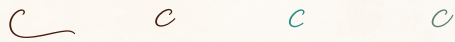
---



SS01 SS02 SS03 SS04 SS05 SS06



SS01 SS02 SS03 SS04 SS05 SS06 SS07 SS08



SS09 SS50 FINA FIN2



SS01 SS02 SS03 SS04 SS05 SS06 SS07 SS08



SS09 SS10 SS11 SS12

// UNCATEGORIZED

■ STYLISTIC ALTERNATES (SALT)

■ MEDIAL FORMS (MEDI)

■ INITIAL FORMS (INIT)

■ TERMINAL FORMS (FINA)

■ TERMINAL FORMS 2 (FIN2)

■ LIGATURES (LIGA)

■ CONTEXTUAL ALTERNATES (CALT)

BELOVED SCRIPT · SWASHES/ALTERNATES

*d* *d* *d* *d* *d* *d* *d* *d* *d* *d*  
 SS01 SS02 SS03 SS04 SS05 SS06 SS07 SS08 SS09

*d* *d* *d* *d* *d* *d* *d* *d* *d* *d*  
 SS10 SS11 SS12 SS13 SS14 SS15 SS16 SS17 SS18 SS19

*d* *d* *d* *d* *d* *d* *d* *d* *d* *d*  
 SS20 SS21 SS22 SS23 SS24 SS25 SS26 SS27 SS28 SS29

*Ed* *d* *d* *d* *dr* *ds* *dx* *dz*  
 SS30 CALT FINA FIN2 LIGA LIGA LIGA LIGA

*E* *E* *E* *E* *E* *E* *E* *E* *E* *E*  
 SS01 SS02 SS03 SS04 SS05 SS06 SS07 SS08 SS09 SS10

// UNCATEGORIZED      ■ STYLISTIC ALTERNATES (SALT)      ■ MEDIAL FORMS (MEDI)  
 ■ INITIAL FORMS (INIT)      ■ TERMINAL FORMS (FINA)      ■ TERMINAL FORMS 2 (FIN2)  
 ■ LIGATURES (LIGA)      ■ CONTEXTUAL ALTERNATES (CALT)

BELOVED SCRIPT · SWASHES/ALTERNATES

F F F F E E E

SS11 SS12 SS13 SS14 SS15 SS16 SS17

e Ce Ce e Ee e es es e

SS01 SS02 SS03 SS04 SS05 SS06 SS07 SS08

e e e e

SS09 SS50 FINA FIN2

F F F F F F F F F

SS01 SS02 SS03 SS04 SS05 SS06 SS07 SS08

f f f f f f f f f f f

SS01 SS02 SS03 SS04 SS05 SS06 SS07 SS08 SS09 SS10

// UNCATEGORIZED

■ STYLISTIC ALTERNATES (SALT)

■ MEDIAL FORMS (MEDI)

■ INITIAL FORMS (INIT)

■ TERMINAL FORMS (FINA)

■ TERMINAL FORMS 2 (FIN2)

■ LIGATURES (LIGA)

■ CONTEXTUAL ALTERNATES (CALT)

BELOVED SCRIPT · SWASHES/ALTERNATES



SS11 SS12 SS13 SS14 SS15 SS16 SS17 SS18 SS19 SS20



SS21 SS22 SS23 SS24 SS25 SS26 SS27 SS28 SS29 SS30



SS31 SS32 SS33 SS34 SS35 SS36 SS37 SS38 SS39 SS40



SS41 SS42 SS43 SS44 SS45 SS46 SS47 SS48 SS49 SS50



CALT SALT // SS51 SS52 SS53 SS54 SS55 SS56 SS57

// UNCATEGORIZED

■ STYLISTIC ALTERNATES (SALT)

■ MEDIAL FORMS (MEDI)

■ INITIAL FORMS (INIT)

■ TERMINAL FORMS (FINA)

■ TERMINAL FORMS 2 (FIN2)

■ LIGATURES (LIGA)

■ CONTEXTUAL ALTERNATES (CALT)

BELOVED SCRIPT · SWASHES/ALTERNATES

*f* *L* *f* *L* *f* *L* *f* *L* *f* *L*  
SS58 SS59 SS60 SS61 SS62 SS63 SS64 SS65 SS66 SS67

*L* *f* *f* *f* *f* *f* *f* *fy*  
SS68 SS69 SS70 SS71 SS72 SS73 SS74 LIGA

*G* *G* *G* *L* *G* *L* *L* *G* *G* *G* *G*  
SS01 SS02 SS03 SS04 SS05 SS06 SS07 SS08 SS09 SS10

*G* *L* *L* *L*  
SS11 SS12 SS13 SS14

*g* *g* *g* *g* *g* *g* *g* *g* *g* *g* *g*  
SS01 SS02 SS03 SS04 SS05 SS06 SS07 SS08 SS09 SS10

// UNCATEGORIZED      ■ STYLISTIC ALTERNATES (SALT)      ■ MEDIAL FORMS (MEDI)  
■ INITIAL FORMS (INIT)      ■ TERMINAL FORMS (FINA)      ■ TERMINAL FORMS 2 (FIN2)  
■ LIGATURES (LIGA)      ■ CONTEXTUAL ALTERNATES (CALT)

BELOVED SCRIPT · SWASHES/ALTERNATES



SS11 SS12 SS13 SS14 SS15 SS16 SS17 SS18 SS19 SS20



SS21 SS22 SS23 SS24 SS25 SS26 SS27 CALT SALT //



// // // //



SS01 SS02 SS03 SS04 SS05 SS06 SS07 SS08 SS09 SS10



SS11 SS12 SS13 SS14 SS15 SS16 SS17 SS18 SS19 SS20

// UNCATEGORIZED

■ STYLISTIC ALTERNATES (SALT)

■ MEDIAL FORMS (MEDI)

■ INITIAL FORMS (INIT)

■ TERMINAL FORMS (FINA)

■ TERMINAL FORMS 2 (FIN2)

■ LIGATURES (LIGA)

■ CONTEXTUAL ALTERNATES (CALT)

BELOVED SCRIPT · SWASHES/ALTERNATES

H H H H H

SS21 SS22 SS23 SS24 SS25

h h h h h h h h h h h

SS01 SS02 SS03 SS04 SS05 SS06 SS07 SS08 SS09 SS10

h h h h h h h h h h

SS11 SS12 SS13 SS14 SS15 SS16 SS17 SS18 SS19 SS20

h h h h h h h h h h

SS21 SS22 SS23 SS24 SS25 SS26 SS27 SS28 SS29 SS30

h h h h h h h h

SS31 SS32 SS33 SS34 SS35 SS50 FINA FIN2

// UNCATEGORIZED

■ STYLISTIC ALTERNATES (SALT)

■ MEDIAL FORMS (MEDI)

■ INITIAL FORMS (INIT)

■ TERMINAL FORMS (FINA)

■ TERMINAL FORMS 2 (FIN2)

■ LIGATURES (LIGA)

■ CONTEXTUAL ALTERNATES (CALT)

BELOVED SCRIPT · SWASHES/ALTERNATES

*I* *I* *I* *I* *I* *I* *I* *I* *I*

SS01 SS02 SS03 SS04 SS05 SS06 SS07 SS08

*i* *ci* *ci* *ci* *ci* *o* *o* *is* *is* *i* *i*

SS01 SS02 SS03 SS04 SS05 SS06 SS07 SS08 SS09 SS10

*i* *i* *i* *i* *i* *i* *i* *i*

SS11 SS12 SS13 SS14 SS15 SS50 FINA FIN2

*L* *L* *L* *L* *L* *L* *L* *L* *L* *L* *L*

SS01 SS02 SS03 SS04 SS05 SS06 SS07 SS08 SS09 SS10

*L* *L* *L* *L* *L* *L* *L* *L*

SS11 SS12 SS13 SS14 SS15 SS16 SS17 SS18

// UNCATEGORIZED

■ STYLISTIC ALTERNATES (SALT)

■ MEDIAL FORMS (MEDI)

■ INITIAL FORMS (INIT)

■ TERMINAL FORMS (FINA)

■ TERMINAL FORMS 2 (FIN2)

■ LIGATURES (LIGA)

■ CONTEXTUAL ALTERNATES (CALT)





BELOVED SCRIPT · SWASHES/ALTERNATES

*j j j j j L L L L L j L*

SS01 SS02 SS03 SS04 SS05 SS06 SS07 SS08 SS09 SS10

*j j j j j L L L L L j j*

SS11 SS12 SS13 SS14 SS15 SS16 SS17 SS18 SS19 SS20

*J j j c j e j J*

SS21 SS22 SS23 SS24 SS25 SS26 SS27

*j j j j*

SS50 FINA SALT LIGA

*K K K K K K K K K K*

SS01 SS02 SS03 SS04 SS05 SS06 SS07 SS08 SS09 SS10

// UNCATEGORIZED

■ STYLISTIC ALTERNATES (SALT)

■ MEDIAL FORMS (MEDI)

■ INITIAL FORMS (INIT)

■ TERMINAL FORMS (FINA)

■ TERMINAL FORMS 2 (FIN2)

■ LIGATURES (LIGA)

■ CONTEXTUAL ALTERNATES (CALT)

BELOVED SCRIPT · SWASHES/ALTERNATES

*K K K K K K K K K*

SS11 SS12 SS13 SS14 SS15 SS16 SS17 SS18 SS19

*k k k k k k k k k k*

SS01 SS02 SS03 SS04 SS05 SS06 SS07 SS08 SS09 SS10

*k k k k k k k k k k*

SS11 SS12 SS13 SS14 SS15 SS16 SS17 SS18 SS19 SS20

*k k k k k k k k k k*

SS21 SS22 SS23 SS24 SS25 SS26 SS27 SS28 SS29 SS30

*Ek k k k k k k*

SS31 SS32 SS33 SS34 SS35 FINA FIN2 SALT

// UNCATEGORIZED

■ STYLISTIC ALTERNATES (SALT)

■ MEDIAL FORMS (MEDI)

■ INITIAL FORMS (INIT)

■ TERMINAL FORMS (FINA)

■ TERMINAL FORMS 2 (FIN2)

■ LIGATURES (LIGA)

■ CONTEXTUAL ALTERNATES (CALT)

BELOVED SCRIPT · SWASHES/ALTERNATES



- // UNCATEGORIZED      ■ STYLISTIC ALTERNATES (SALT)      ■ MEDIAL FORMS (MEDI)
- INITIAL FORMS (INIT)      ■ TERMINAL FORMS (FINA)      ■ TERMINAL FORMS 2 (FIN2)
- LIGATURES (LIGA)      ■ CONTEXTUAL ALTERNATES (CALT)

BELOVED SCRIPT · SWASHES/ALTERNATES

---

*El* *l* *l* *l* *l* *l* *l* *l* *lt*  
SS31 SS32 SS33 SS34 SS35 SS50 FINA // LIGA

---

*M* *M* *M* *M* *M* *M* *M* *M* *M* *M*  
SS01 SS02 SS03 SS04 SS05 SS06 SS07 SS08 SS09

*M* *M* *M* *M* *M* *M*  
SS10 SS11 SS12 SS13 SS14 SS15

---

*m* *m* *m* *m* *m* *m* *m* *m* *m* *m*  
SS01 SS02 SS03 SS04 SS05 SS06 SS07 SS08 SS09

*m* *m* *m* *m* *m* *m* *m* *m* *m*  
SS10 SS11 SS12 SS13 SS14 SS15 SS50 FINA FIN2

---

- // UNCATEGORIZED
  - STYLISTIC ALTERNATES (SALT)
  - MEDIAL FORMS (MEDI)
  - INITIAL FORMS (INIT)
  - TERMINAL FORMS (FINA)
  - TERMINAL FORMS 2 (FIN2)
  - LIGATURES (LIGA)
  - CONTEXTUAL ALTERNATES (CALT)
-

BELOVED SCRIPT · SWASHES/ALTERNATES

N N N N N N N N N N

SS01 SS02 SS03 SS04 SS05 SS06 SS07 SS08 SS09

EN EN EN N N N N N N

SS10 SS11 SS12 SS13 SS14 SS15 SS16 SS17 SS18

n cn cn cn En n n n n n n

SS01 SS02 SS03 SS04 SS05 SS06 SS07 SS08 SS09 SS10

n n n n n n n n

SS11 SS12 SS13 SS14 SS15 SS50 FINA FIN2

O O O O O O O O

SS01 SS02 SS03 SS04 SS05 SS06 SS07 SS08

// UNCATEGORIZED

■ STYLISTIC ALTERNATES (SALT)

■ MEDIAL FORMS (MEDI)

■ INITIAL FORMS (INIT)

■ TERMINAL FORMS (FINA)

■ TERMINAL FORMS 2 (FIN2)

■ LIGATURES (LIGA)

■ CONTEXTUAL ALTERNATES (CALT)

BELOVED SCRIPT · SWASHES/ALTERNATES

o e s es Co Co Co To o o  
 SS01 SS02 SS03 SS04 SS05 SS06 SS07 SS08 SS09

es es e or os ox oz  
 SS10 SS11 CALT LIGA LIGA LIGA LIGA

P P P P P p P P P  
 SS01 SS02 SS03 SS04 SS05 SS06 SS07 SS08

p p p p p L L L L p p L  
 SS01 SS02 SS03 SS04 SS05 SS06 SS07 SS08 SS09 SS10

L L L L p L L L L p  
 SS11 SS12 SS13 SS14 SS15 SS16 SS17 SS18 SS19 SS20

// UNCATEGORIZED      ■ STYLISTIC ALTERNATES (SALT)      ■ MEDIAL FORMS (MEDI)  
 ■ INITIAL FORMS (INIT)      ■ TERMINAL FORMS (FINA)      ■ TERMINAL FORMS 2 (FIN2)  
 ■ LIGATURES (LIGA)      ■ CONTEXTUAL ALTERNATES (CALT)

BELOVED SCRIPT · SWASHES/ALTERNATES

  
SS21 SS22 SS23 SS24 SS25 SS26 SS27 SS28 SS29

  
CALT SALT LIGA LIGA LIGA LIGA

  
SS01 SS02 SS03 SS04 SS05 SS06 SS07 SS08

  
SS01 SS02 SS03 SS04 SS05 SS06 SS07 SS08 SS09

  
SS10 SS50 FINA LIGA

// UNCATEGORIZED      ■ STYLISTIC ALTERNATES (SALT)      ■ MEDIAL FORMS (MEDI)  
■ INITIAL FORMS (INIT)      ■ TERMINAL FORMS (FINA)      ■ TERMINAL FORMS 2 (FIN2)  
■ LIGATURES (LIGA)      ■ CONTEXTUAL ALTERNATES (CALT)

BELOVED SCRIPT · SWASHES/ALTERNATES

R R R R R R R R R R R

SS01 SS02 SS03 SS04 SS05 SS06 SS07 SS08 SS09 SS10

R R R R R

SS11 SS12 SS13 SS14 SS15

r Cr Cr Cr Cr r r r r r r

SS01 SS02 SS03 SS04 SS05 SS06 SS07 SS08 SS09 SS10

r r r r r r r r r r

SS11 SS12 SS13 SS14 SS15 SS50 INIT FINA FIN2 SALT

S S S S S S S S S S

SS01 SS02 SS03 SS04 SS05 SS06 SS07 SS08 SS09 SS10

- // UNCATEGORIZED
- LIGATURES (LIGA)
- STYLISTIC ALTERNATES (SALT)
- TERMINAL FORMS (FINA)
- MEDIAL FORMS (MEDI)
- TERMINAL FORMS 2 (FIN2)
- CONTEXTUAL ALTERNATES (CALT)



BELOVED SCRIPT · SWASHES/ALTERNATES



// UNCATEGORIZED

■ STYLISTIC ALTERNATES (SALT)

■ MEDIAL FORMS (MEDI)

■ INITIAL FORMS (INIT)

■ TERMINAL FORMS (FINA)

■ TERMINAL FORMS 2 (FIN2)

■ LIGATURES (LIGA)

■ CONTEXTUAL ALTERNATES (CALT)

BELOVED SCRIPT · SWASHES/ALTERNATES

*T* *T* *T* *T* *T* *T* *T* *T* *T*

SS01 SS02 SS03 SS04 SS05 SS06 SS07 SS08

*T* *T* *Th*

SS09 SS10 LIGA

*t* *t* *t* *t* *t* *t* *t* *t* *t*

SS01 SS02 SS03 SS04 SS05 SS06 SS07 SS08 SS09

*t* *t* *t* *t* *t* *t* *t* *t* *t*

SS10 SS11 SS12 SS13 SS14 SS15 SS16 SS17 SS18

*t* *tr* *ts* *tt* *tx* *tz*

CALT LIGA LIGA LIGA LIGA LIGA

// UNCATEGORIZED

■ STYLISTIC ALTERNATES (SALT)

■ MEDIAL FORMS (MEDI)

■ INITIAL FORMS (INIT)

■ TERMINAL FORMS (FINA)

■ TERMINAL FORMS 2 (FIN2)

■ LIGATURES (LIGA)

■ CONTEXTUAL ALTERNATES (CALT)

BELOVED SCRIPT · SWASHES/ALTERNATES

---

U U U U U U U U

SS01 SS02 SS03 SS04 SS05 SS06 SS07

U U U

SS08 SS09 SS10

---

u cu cu cu cu u u

SS01 SS02 SS03 SS04 SS05 SS06 SS07

u u u u

SS08 SS50 FINA FIN2

---

V V V V V V V V V V

SS01 SS02 SS03 SS04 SS05 SS06 SS07 SS08 SS09

// UNCATEGORIZED

■ STYLISTIC ALTERNATES (SALT)

■ MEDIAL FORMS (MEDI)

■ INITIAL FORMS (INIT)

■ TERMINAL FORMS (FINA)

■ TERMINAL FORMS 2 (FIN2)

■ LIGATURES (LIGA)

■ CONTEXTUAL ALTERNATES (CALT)

---

BELOVED SCRIPT · SWASHES/ALTERNATES

*v v v*

SS10 SS11 SS12

*ux uz*

LIGA LIGA

*v cv cv cv cv v d d d u ur us*

SS01 SS02 SS03 SS04 SS05 SS06 SS07 SS08 CALT LIGA LIGA

*W W W W W W W W W W W W*

SS01 SS02 SS03 SS04 SS05 SS06 SS07 SS08 SS09 SS10 SS11

*w cw cw cw cw w d d d*

SS01 SS02 SS03 SS04 SS05 SS06 SS07 SS08

*w ur us ux uz*

CALT LIGA LIGA LIGA LIGA

// UNCATEGORIZED

■ STYLISTIC ALTERNATES (SALT)

■ MEDIAL FORMS (MEDI)

■ INITIAL FORMS (INIT)

■ TERMINAL FORMS (FINA)

■ TERMINAL FORMS 2 (FIN2)

■ LIGATURES (LIGA)

■ CONTEXTUAL ALTERNATES (CALT)

BELOVED SCRIPT · SWASHES/ALTERNATES

---

X X X X X X X

SS01 SS02 SS03 SS04 SS05 SS06

X X X X X

SS07 SS08 SS09 SS10 SS11

---

x Cx Cx Cx Cx Cx Cx Cx Cx Cx

SS01 SS02 SS03 SS04 SS05 SS06 SS07 SS08 SS09

X X X X X X X X X

SS10 SS11 SS12 SS13 SS14 SS15 SS16 SS17 SS18

x x x x x

SS50 INIT MEDI FINA FIN2

---

// UNCATEGORIZED

■ STYLISTIC ALTERNATES (SALT)

■ MEDIAL FORMS (MEDI)

■ INITIAL FORMS (INIT)

■ TERMINAL FORMS (FINA)

■ TERMINAL FORMS 2 (FIN2)

■ LIGATURES (LIGA)

■ CONTEXTUAL ALTERNATES (CALT)

---

BELOVED SCRIPT · SWASHES/ALTERNATES

Y Y Y Y Y Y Y Y Y

SS01 SS02 SS03 SS04 SS05 SS06 SS07 SS08

Y Y Y Y Y Y Y

SS09 SS10 SS11 SS12 SS13 SS14 SS15

y y y y y y y y y

SS01 SS02 SS03 SS04 SS05 SS06 SS07 SS08

y y y y y y y y

SS09 SS10 SS11 SS12 SS13 SS14 SS15 SS16

y y y y y y y cy

SS17 SS18 SS19 SS20 SS21 SS22 SS23 SS24

// UNCATEGORIZED

■ STYLISTIC ALTERNATES (SALT)

■ MEDIAL FORMS (MEDI)

■ INITIAL FORMS (INIT)

■ TERMINAL FORMS (FINA)

■ TERMINAL FORMS 2 (FIN2)

■ LIGATURES (LIGA)

■ CONTEXTUAL ALTERNATES (CALT)

BELOVED SCRIPT · SWASHES/ALTERNATES









SS25 SS26 SS27 SS50 FINA SALT LIGA










SS01 SS02 SS03 SS04 SS05 SS06 SS07 SS08











SS09 SS10 SS11 SS12 SS13 SS14 SS15 SS16 SS17










SS01 SS02 SS03 SS04 SS05 SS06 SS07 SS08











SS09 SS10 SS11 SS12 SS13 SS14 SS15 SS16 SS17

// UNCATEGORIZED ■ STYLISTIC ALTERNATES (SALT) ■ MEDIAL FORMS (MEDI)  
■ INITIAL FORMS (INIT) ■ TERMINAL FORMS (FINA) ■ TERMINAL FORMS 2 (FIN2)  
■ LIGATURES (LIGA) ■ CONTEXTUAL ALTERNATES (CALT)

BELOVED SCRIPT · SWASHES/ALTERNATES



SS18 SS19 SS20 SS21 SS22 SS23 SS24 SS25 SS26



SS27 INIT MEDI CALT SALT // // // //



// // // // // // // //



// // // // // //



// // //

// UNCATEGORIZED

■ STYLISTIC ALTERNATES (SALT)

■ MEDIAL FORMS (MEDI)

■ INITIAL FORMS (INIT)

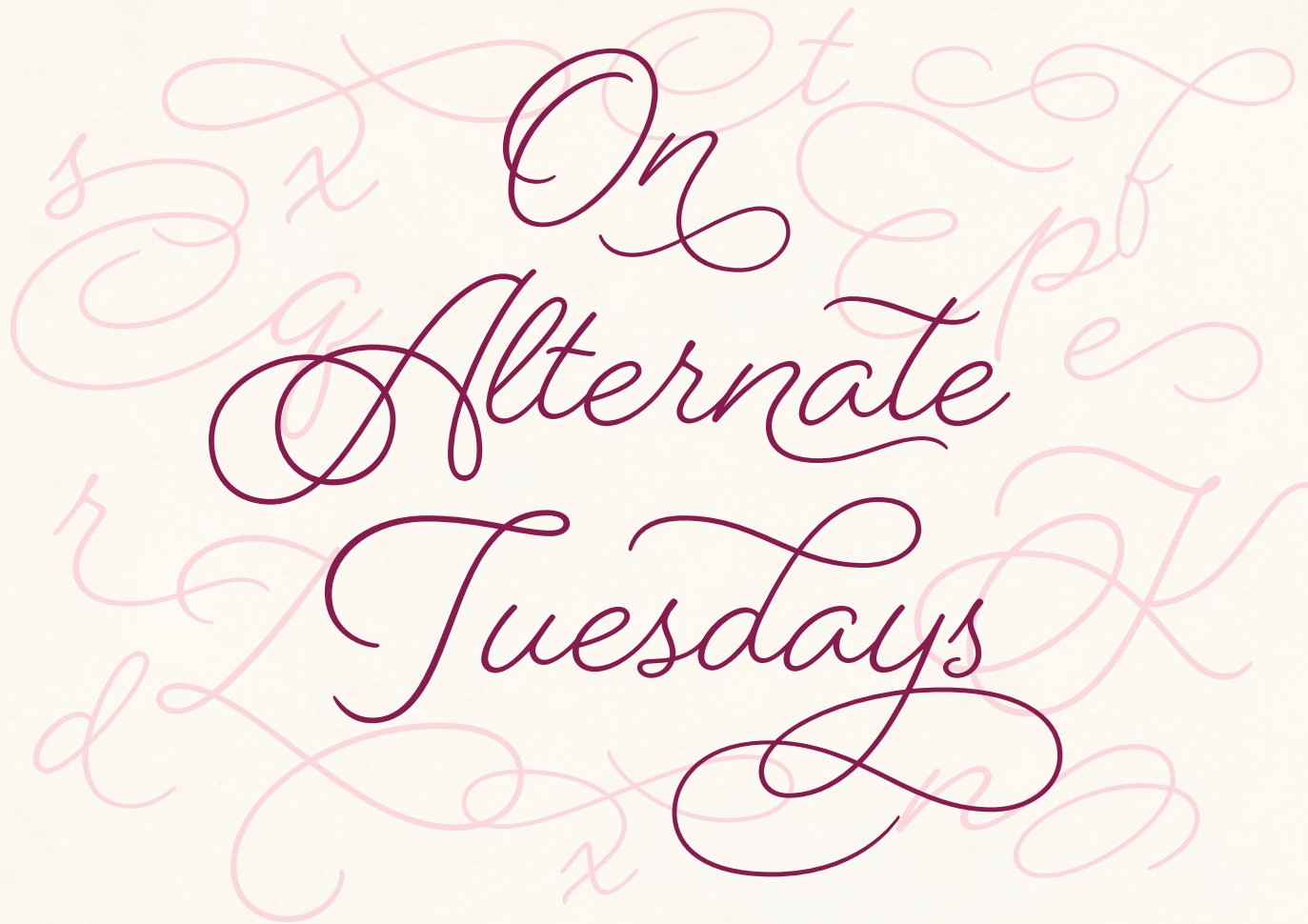
■ TERMINAL FORMS (FINA)

■ TERMINAL FORMS 2 (FIN2)

■ LIGATURES (LIGA)

■ CONTEXTUAL ALTERNATES (CALT)





VARIOUS SWASHES & ALTERNATES

Dearly Beloved Dearly Beloved

Dearly Beloved Dearly Beloved

Dearly Beloved Dearly Beloved

Dearly Beloved Dearly Beloved

VARIOUS SWASHES & ALTERNATES

---



xo Elizabeth

STANDARD CHARACTERS

xo Elizabeth

SWASHES & ALTERNATES

- SS17
- SS07
- SS08
- SS18
- CONTEXTUAL ALTERNATES (CALT)
- SS18
- MEDIAL FORMS (MEDI)

CONTEXTUAL ALTERNATES

*a bronze patina develops with age*

1. STANDARD CHARACTERS

---

*a bronze patina develops with age*

2. WITH CONTEXTUAL ALTERNATES SETTING ENABLED

---

*a bronze patina develops with age*

3. (WITH ADDITIONAL TERMINAL FORMS AND ALTERNATES)

---

■ STYLISTIC ALTERNATES (SALT)

■ CONTEXTUAL ALTERNATES (CALT)

■ SS50

■ TERMINAL FORMS (FINA)

■ TERMINAL FORMS 2 (FIN2)

LIGATURES

Thousands of Letters  
from Leipzig

STANDARD CHARACTERS

---

Thousands of Letters  
from Leipzig

LIGATURES SETTING ENABLED

---

■ LIGATURES (LIGA)

OR MUSCATELLA  
NEW YORK · LOS ANGELES · MILAN

BELOVED  
SCRIPT &  
BELOVED SANS  
& BELOVED  
ORNAMENTS

*Frosty Peaks*  
- ICE CREAM -

---

*Scoops of the Day!*

---

SALTED CARAMEL *lllee*

*→* KAFIR LIME LEAF

CHILI CHOCOLATE *🌀*

*WILD HORSES*  
*Couldn't drag me away*



*l.l.l*  
BELOVED  
ORNAMENTS

*—USER'S GUIDE—*



#### OPENTYPE FAQ:

For information on how to access the swashes and alternates,  
visit [LauraWorthingtonType.com/faqs](http://LauraWorthingtonType.com/faqs)

All operating systems come equipped with a utility that make it possible to access the swashes and alternates in my fonts. Adobe Illustrator and InDesign (CS versions), Quark Xpress 7.0 (and above), CorelDRAW X6 (and above) have OpenType and Glyph panels, You may download instructional PDFs on my FAQs page for these programs. Microsoft Word 2010 and later versions allow you to access some OpenType features in the application as well.

There are additional ways to access alternates/swashes if you do not have one of the programs listed above: either by using your operating system's utility Character Map (Windows), Character Viewer (Mac OS versions prior to 10.9) or through Font Book (Mac OS 10.9 and later), by downloading NexusFont (free, Windows only) or by purchasing a software program such as PopChar or Ultra Character Map.

I recommend trying out Character Map/Viewer or NexusFont first to see how it works for you before purchasing third party software. If you don't like how these utilities work, here are some additional solutions...

For Mac users running OS 10.8 and above, there is Ultra Character Map, which may be downloaded on the App Store for \$9.99

For both Mac and PC, I also recommend PopChar by Ergonis (especially operating systems prior to 10.8), which is a standalone glyphs panel. It makes it easy to select and copy the swash or alternate letterform you want and paste it into just about any document/program (Photoshop, Word, Publisher, etc.) If you have, or are planning to purchase one of my fonts, contact me with a copy of your receipt for a 30% discount code on PopChar.





## BELOVED ORNAMENTS FONT SPECIFICATIONS

### CHARACTERS:

**81 characters**

### FONT FILES:

**1 OpenType (.otf) file and 1 TrueType (.ttf) file**

### AVAILABLE:

**[LauraWorthingtonType.com](http://LauraWorthingtonType.com)**

### OPENTYPE FAQ:

To access swashes, alternates, ornaments,  
and for any OpenType questions,  
go to [LauraWorthingtonType.com/faqs](http://LauraWorthingtonType.com/faqs)

### ORIGINAL RELEASE:

**August 2015**

# ORNAMENTS



BELOVED ORNAMENTS · CHARACTERS



OR MUSCATELLA  
NEW YORK · LOS ANGELES · MILAN

BELOVED  
SCRIPT &  
BELOVED SANS  
& BELOVED  
ORNAMENTS

*Frosty Peaks*  
- ICE CREAM -

---

*Scoops of the Day!*

---

SALTED CARAMEL *lllee*

*→* KAFIR LIME LEAF

CHILI CHOCOLATE *🌀*

*WILD HORSES*  
*Couldn't drag me away*